



Test  
Arrives



Ask for  
help



Fit Test



Open your  
test kit



Follow  
instructions



Write on  
bottle



Container  
or Bag?



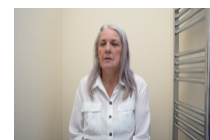
Tissue in  
Container



# Fit test



Container  
into Toilet



Go to the  
toilet



Take  
container  
from toilet



Flush toilet



Wash  
hands



Take  
sample



Put sample  
into tube



Wash  
hands



Check Date  
on tube



Check tube  
is closed



Stick down  
seal



Post